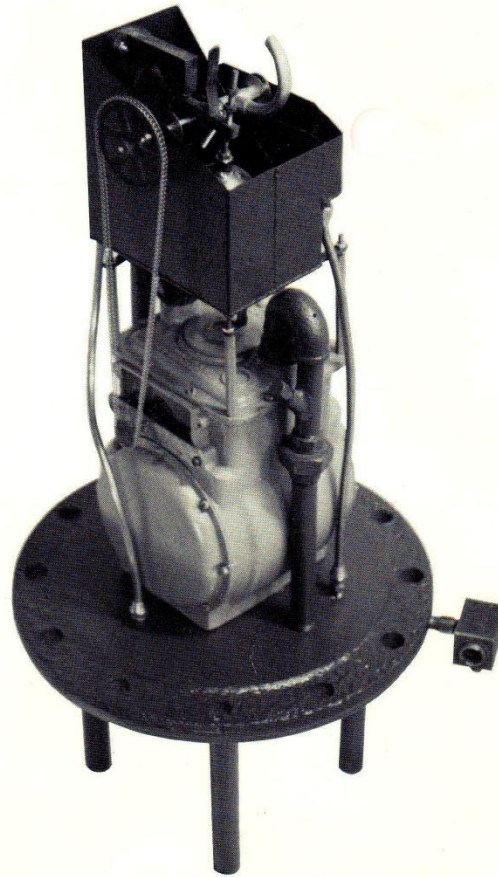


**PEERLESS
Type "M" Odorizer**

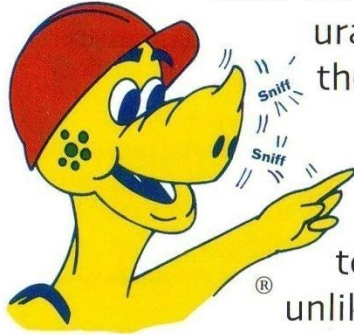


National Historic Mechanical Engineering Landmark
Designated September 10, 1992

PEERLESS MFG. CO.

SNIFFASAURUS

The strong smell of rotten eggs may indicate a natural gas leak. The chemical mercaptan is added to natural gas to produce this smell. Scratch the flame to get a whiff of its strange odor. A gas leak can be dangerous. Memorize the safety rules on the back of this card to protect yourself in the unlikely event of a gas leak.



CenterPointTM
Energy

© 2010 by Moore Syndication, Inc.

KEYS TO NATURAL GAS SAFETY:

WHAT TO DO IN CASE OF A NATURAL GAS LEAK

Leaking natural gas is dangerous. It can cause a fire or explosion. A natural gas leak is indicated by the strong smell of rotten eggs (the chemical mercaptan, which is added to natural gas). Here are safety rules to follow if you smell the strong odor of mercaptan.

DON'T –

- Operate anything electrical or light a flame.
- Turn on or off lights.
- Use the telephone.
- Turn on or off the television or radio.
- Turn on or off a flashlight.
- Turn on the gas range or other gas appliance.
- Strike a match.
- Open an automatic garage door.

DO –

- Exit the building immediately.
- Leave the door open on the way out.
- Leave the area immediately if you're outside.
- Go to another place and call the fire department or gas company to report the leak.
- Stay away until someone from the fire department, gas company or emergency agency says it's safe to return.

